

60 square meters of photovoltaic panels



Overview

Estimate how many solar panels fit your roof and the total system capacity (kW) based on roof area and panel specifications. The answer lies in something most solar salespeople never properly explain— solar irradiance and your actual energy potential per square meter. Here's what's shocking: A single square meter of solar panel can generate anywhere from 150 to 250 watts under ideal conditions. That's basically a 66×39 solar panel. But what is the wattage?

That is unfortunately not listed at all. Picture this: that's about the size of a badminton court converting sunlight into Netflix-binging energy HOME / What Can 60 Square Meters of Solar Panels Actually Power?

Let's Crunch the. Estimates the energy production of grid-connected photovoltaic (PV) energy systems throughout the world. By inputting your energy consumption details, this calculator can provide you with an estimate of how many solar panels you'll need.

60 square meters of photovoltaic panels



Solar Panel Size Calculator - Estimate Panel Width

Using the Solar Panel Size Estimator Calculator involves a few straightforward steps, ensuring you get the most accurate results: Energy Consumption Input: Enter your average monthly ...

What Can 60 Square Meters of Solar Panels Actually Power? Let's ...

A typical 60m² solar array isn't just some abstract eco-statement - it's a legit power plant on your rooftop. Picture this: that's about the size of a badminton court converting sunlight into Netflix-binging energy.



PVWatts Calculator

Estimates the energy production and cost of energy of grid-connected photovoltaic (PV) energy systems throughout the world. It allows homeowners, small building owners, installers and manufacturers to ...

Solar Power Per Square Meter

Calculator

Calculate solar panel energy output per square meter. Get accurate daily, monthly, and annual production estimates based on location, panel specs, and system losses.



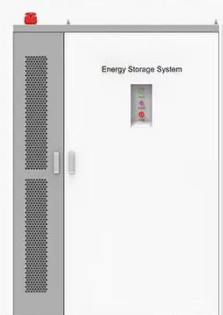
Solar Energy Generation Per Square Metre: A Complete Guide

On a clear day, each square metre of the Earth's surface receives approximately 1,000 watts of solar energy, also known as 1 kW/m². This energy can be converted into electricity using ...

Solar Panel Output Per Square Meter

Discover how much electricity solar panels generate per square meter, explore efficiency factors, technology comparisons, and future innovations in photovoltaic energy.

◆ PRODUCT INFORMATION ◆



- BATTERY CAPACITY
50kWh~500kWh
- DC VOLTAGE RANGE
400V~1000V
- DEGREE OF PROTECTION
IP54
- OPERATING TEMPERATURE RANGE
-10~50°C

Roof Area to Solar Panel Capacity Calculator (kW Estimator)

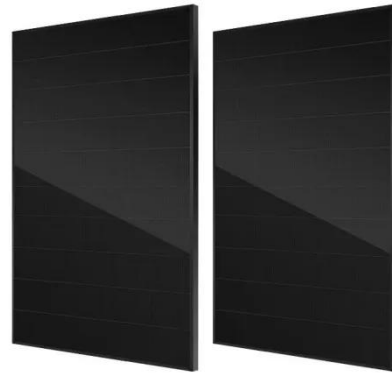
Determining how many solar panels fit on your roof and the total power output (in kW) is one of the first steps in planning a solar installation. This Roof

INTEGRATED DESIGNEASY TO TRANSPORT AND INSTALL,
FLEXIBLE DEPLOYMENT

Area to Solar Panel Capacity Calculator helps ...

Standard Solar Panel Sizes And Wattages (100W-500W Dimensions)

As we can see, those 60-cell, 72-cell, and 96-cell solar panel dimensions are a bit theoretical. These are the practical solar panel dimensions by wattage from solar panels that are actually sold on the ...



Solar Panel Watts Per Square Meter Explained

Learn how to measure solar panel efficiency using solar panel watts per square meter with this comprehensive guide.

Solar Power per Square Meter Calculator

A solar power per square meter calculator takes details regarding these factors and then gives the accurate output generated by the solar panel per

square meter.



Contact Us

For catalog requests, pricing, or partnerships, please visit:
<https://kreatywny-dom.pl>

