

KREATYWNY ENERGY POLSKA

Base ribs for photovoltaics



Overview

Metcraft Engineering. Metcraft Engineering. S-5! offers a variety of engineered solutions for mounting solar PV and related components on both standing seam and exposed-fastened metal roofing. The S-5! PVKIT 2.0 EdgeGrab Standard provides a perimeter module mounting solution without rails. These profiles are commonly referred to as R-Panel or PBR-Panel. You can also pair this metal roof bracket. Trapezoidal steel sheet roofs are widely used for their lightness, strength, and longevity. Use the slotted top hole for space correction and to easily square nuts to apply. Shear strength can be utilized only.

Base ribs for photovoltaics



RibBracket I-V(TM) Exposed Fastener Metal Roof Brackets , S-5!

The RibBracket I-V is used with the PVKIT® for (rail-less) solar PV mounting. This metal roof bracket comes in five different sizes and is an economical, sheeting-only attachment solution that can be ...

S-5! RibBracket(TM) , S-5! RibBracket , Circuit Solar

The RibBracket is the perfect attachment solution for specific North American trapezoidal, exposed-fastened metal roofs. These profiles are commonly referred to as R-Panel or PBR-Panel. Mount ...



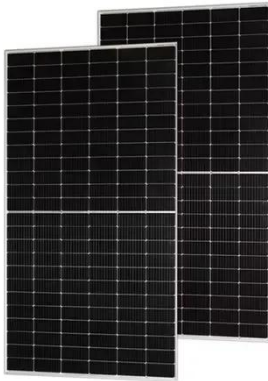
S-5! Solar Mounting Systems , Big Rock Supply

The S-5! SolarFoot provides a strong, versatile base for mounting solar PV systems on exposed-fastened metal roofs. Each foot includes a factory-applied EPDM rubber gasket that ensures a ...



Base Structures for Photovoltaic Panels - Metcraft Engineering

We provide complete PV Panel Mounting solutions for Organizations engaged setting up Solar Energy farms, we manufacturer Structure using various types of material Like Pipes, Angles, Plates, ...



RibBracket R

S-5!® RibBracket™ is the right way to attach almost anything to select exposed-fastened, trapezoidal roof profiles, including PV through DirectAttached™ or rail methods.

S-5! RibBracket III

Mount HVAC, walkways, railed PV systems and more to your metal roof. You can also pair this metal roof bracket with the S-5-PVKIT® for rail-less (direct-attach(TM)) solar PV mounting.



I-V RibBracket

A structural aluminum attachment bracket, RibBracket I-V is compatible with most common metal roofing materials and most trapezoidal rib profiles found worldwide.



Pitched Roof In-Rib Range

It is a photovoltaic mounting system intended for pitched trapezoidal steel sheet roofs. Designed for landscape installation, it offers a simple and high-performance solution suitable for dry coverings.



S5! RIB BRACKET 1

The RibBracket I is the perfect solution for mounting solar PV systems on metal roofs--no rails required. Designed for use with the PVKIT®, this versatile bracket offers a low-cost, high-strength attachment ...

RibBracket(TM) Exposed Fastener Metal Roof Brackets , S-5!

Mount HVAC, walkways, railed PV systems and more to your metal roof. You can also pair this metal roof bracket

with the S-5-PVKIT® for rail-less (direct-attach(TM)) solar PV mounting.



Contact Us

For catalog requests, pricing, or partnerships, please visit:
<https://kreatywny-dom.pl>

