

# **Can photovoltaic panels be installed in weak current boxes**



## Overview

---

If the solar panel will be installed in a harsh environment with high exposure to dust and moisture, a junction box with a high IP rating can provide extra protection against potential damage and failure. Solar photovoltaic (PV) panels can be wired to increase voltage and/or current. For 11A, 10awg is overkill except over very, very long distances. 12 requires rapid shutdown devices, AFCI protection, and proper grounding. Most jurisdictions require licensed electrician involvement for breaker. Here are design tips for methods of PV system utility interconnection. The purpose of this article is to give you a basic understanding of the concepts and rules for connecting a solar panel system to the utility grid and the household electrical box or meter. The best and the median values of the main 16 parameters among 1300 PVPs were identified. Many prospective PV system owners wrongly believe that electrical integration.

## Can photovoltaic panels be installed in weak current boxes

---



### How to Wire Solar Panels to Breaker Box: Complete Safety ...

Learn how to safely wire solar panels to your breaker box with our comprehensive guide. Includes NEC compliance, safety procedures, and step-by-step instructions.

### How to connect a PV solar system to the utility grid

The purpose of this article is to give you a basic understanding of the concepts and rules for connecting a solar panel system to the utility grid and the household electrical box or meter.



### Working on Solar Wiring and Fusing (EB-2023-0676)

This publication explores some of the essential considerations for wiring a solar PV system, including important requirements for voltage, ampacity, voltage drop, and circuit length.

### The latest specifications for weak-current connections of ...

This specification covers the performance, tests and quality standards for the SOLARLOK\* Z-Rail Junction box which allows the electrical connection between Photovoltaic (PV) panels.



## PHOTOVOLTAIC WEAK CURRENT COMBINER BOX INSTALLATION

Problem: Loose connections within the combiner box can lead to unstable current flow, affecting system performance. Solution: Check all connectors and terminals for tightness and proper contact. [pdf]

## Solar Panel Junction Box: Everything You Need to Know

If the solar panel will be installed in a harsh environment with high exposure to dust and moisture, a junction box with a high IP rating can provide extra protection against potential damage ...



## The Ultimate Guide to Solar Combiner Boxes: From Basics to ...

Explore the comprehensive guide to PV Solar Combiner Boxes: Learn about types, components, selection criteria,

installation best practices, maintenance, and advanced technologies. ...



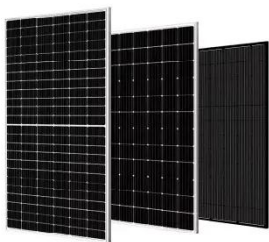
### PV wires in the house

Most local jurisdictions require DC power wiring (such as from solar arrays and batteries) be in metal conduit inside buildings and dwellings. Check your local authority to confirm their code ...



### Can photovoltaic panels be connected to a weak current box

Can a solar panel be connected without a junction box? Without a junction box for solar panels, it is likely impossible to facilitate the safe transfer of electricity from the panel to the inverter or battery ...



### 64-4-\* Wiring methods for solar photovoltaic systems

Where a combiner box is not located within 1 m of PV modules or where conductors are run inside the building or

structure, wiring methods specified in Section 12 are required.



---

## Contact Us

---

For catalog requests, pricing, or partnerships, please visit:  
<https://kreatywny-dom.pl>

