

Can the solar battery cabinet still be used if the voltage is lower than 28v



Overview

If the voltage from the solar array or battery bank drops too low by the time it reaches the inverter terminals, the inverter may register a fault and shut down. This is a common cause of 'nuisance tripping,' where the system stops working even though there is ample. Voltage drop is a silent thief in solar and energy storage systems. It quietly steals power, reduces efficiency, and can even cause frustrating equipment shutdowns. This is in Pittsburgh, PA, so performance on cold cloudy days is vital. It seems like most 50w panels have an. Home energy storage battery cabinets typically operate at voltages between 12V to 48V, depending on the specific type and design of the system. I'm a die hard 24v guy, you could take your 4 and wire in series, then get another 4 and parallel the 2 banks. Basically, you have three main choices— 12 volts, 24 volts, or 48 volts.

Can the solar battery cabinet still be used if the voltage is lower than



Step-by-Step Solar Battery Cabinet Installation Guide

This article provides a detailed guide on installing a solar battery cabinet, helping you complete the installation process smoothly and enjoy the benefits of clean energy.

Ultimate Guide to Solar Battery Charging: SOC, Voltage, & BMS Tips

We'll break down SOC vs. voltage, fix charging issues, and share pro tips to keep your LiFePO4 or lead-acid battery in top shape. Plus, we've got charts and a handy formula to make it crystal clear.



Battery Voltage Chart for Batteries Charged By Solar Panels

When a solar battery is exposed to temperatures below 30°F, it needs a higher voltage to reach its maximum charge. Conversely, when temperatures exceed 90°F, a solar battery will start to overheat, ...

How many volts does the energy

storage battery cabinet have for ...

Yes, transitioning from lower voltage configurations to higher voltage systems is typically feasible but requires valuable consideration and planning. Homeowners should assess their current ...



The Solar Lab

Most people associate this lower voltage with car batteries, as well as the type of batteries used for some RV and camper van applications. For solar power systems, they're typically used for small ...

LiFePO4 battery storage in extreme cold climate

I want to upgrade the solar system and am trying to decide on the batteries to use. I was initially going to get one of the wall mounted EG4 batteries, but then read it is only recommended for ...



The Ultimate Guide to Solar Battery Storage Cabinets

This guide will delve into the benefits of solar battery storage cabinets, with a special focus on indoor storage solutions, their key features, and how they can



enhance the performance ...

Voltage Drop Limits in Solar+Storage: The Ultimate Guide

Inverters are the heart of a solar power system, and they are designed to operate within a specific voltage window. If the voltage from the solar array or battery bank drops too low by the time ...



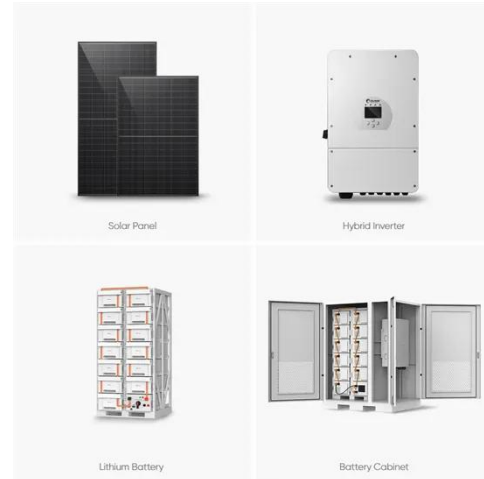
Solar and battery storage

With a smart Enphase Energy System, even if your battery nears empty overnight, your solar panel will still work when the sun rises again. Along with powering your home, solar will also start charging ...

Solar panel voltage barely higher than battery How will

A 12V panel can be connected directly to a 12V battery, and my understanding is that the panel voltage is pulled down to

the battery voltage so it does not destroy the battery (18V is too much voltage for ...



Contact Us

For catalog requests, pricing, or partnerships, please visit:
<https://kreatywny-dom.pl>

