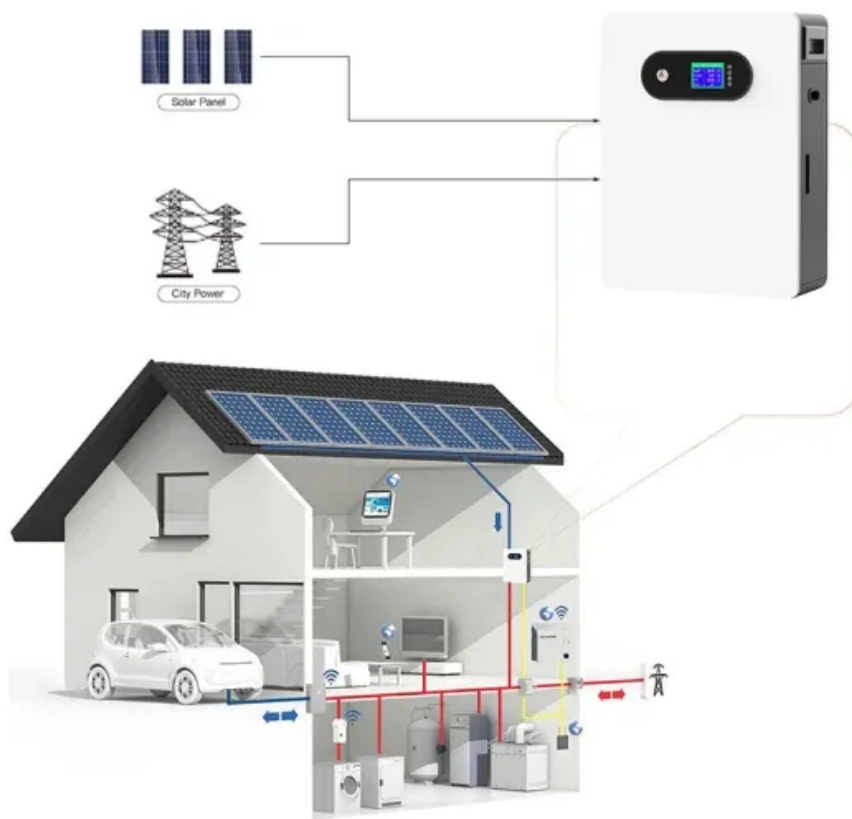


Construction specification for air intake in generator room



Construction specification for air intake in generator room



Generator Room Air Intake and Exhaust ...

Learn how to calculate air intake and exhaust volumes in diesel generator rooms, including key parameters for air-cooled and water-cooled systems.



Generator Enclosure Spacing

Kohler uses CFD for many aspects of electrical generator design such as alternator cooling, exhaust system, engine air intake, engine fuel system, and cooling systems design, ...



Design of air intake and exhaust in generator room

For generators with remote radiators, it is recommended that the exhaust air should be sourced as high as possible and directly above the generator sets. Significant bypass of ventilation airflow directly into ...

Examples of Airflows for Different

Enclosed Generator ...

Hot air discharge can accumulate in air between the generator and a wall resulting in the intake air temperature rising well above ambient air temperature. When discharging air vertically, ...



GENERIC GENERATOR INSTALLATION MANUAL



When ever possible, face the generator air inlet openings away from the wind. The wind can prevent the air intake louver from opening on start up. The air inlet must be capable of moving ...

Generator room air supply and exhaust specifications

How should a generator room be ventilated? Make sure to put all necessary components of a successful ventilation system into place, including air intake and outlet vents, fans, and air ducts. Browse Used ...



Design of Air Inlet and Exhaust Route in Diesel ...

When designing the air intake and exhaust of diesel generator room, we should pay attention to the matters

which mentions in this article.



DG 263000 Engine Generator System

Provide emergency power to the controls associated with combustion air, ventilation air and other systems that must operate when the engine-generator is operating. Edit the specifications ...



Air intake and exhaust in the generator room

Make sure to put all necessary components of a successful ventilation system into place, including air intake and outlet vents, fans, and air ducts. Browse Used Generators By making ...

Generator room air inlet and exhaust parameters

Intake and exhaust areas are based on specified air velocities and a louver free area of 50% is used. Total required intake/exhaust areas are presented for

the number of active generators and ...



Contact Us

For catalog requests, pricing, or partnerships, please visit:
<https://kreatywny-dom.pl>

