

KREATYWNY ENERGY POLSKA

Disassembly of Outdoor Power Station for Communication Base Station



Overview

The Huawei RRU3908 is an outdoor Radio Base Station with one to four carriers and one to six sectors at 20/40 Watt RF output power per carrier. Part 1 is the teardown itself with a walkthrough of different design highlights. Base electronics Connections Rear connections Delocalised base electronics Startup Configuration button Status LED Configuration by webinterface Configuration via the network Configuration via the configuration WLAN Login to the web interface Secured connection General Network Analogue phone SIP. Main Base Station Equipment Often referred to as the brain center, this includes: Baseband Unit (BBU): Handles baseband signal processing. Remote Radio Unit (RRU): Converts signals to radio frequencies for transmission. With the Software Defined Radio (SDR) technology, the RRU3928 supports the dual-mode operation of any two modes of GSM, UMTS, and LTE through software configuration modification. This unit must only be installed by personnel that have been trained by Telensa or their representatives to carry out this work. The supply voltage for the base. Follow this guide to fully disassemble your FixHub Portable Power Station. For an even closer look, check out the electrical schematics here. A charged lithium-ion battery may catch fire if damaged.

Disassembly of Outdoor Power Station for Communication Base Station



Portable Power Station Complete Disassembly

Follow this guide to fully disassemble your FixHub Portable Power Station. For an even closer look, check out the electrical schematics [here](#).

Technical manual

It is available as indoor and outdoor station. This manual handles the outdoor station.



Huawei RRU3908 base station teardown and circuit analysis (part 1 & 2)

The Huawei RRU3908 is an outdoor Radio Base Station with one to four carriers and one to six sectors at 20/40 Watt RF output power per carrier. Part 1 is the teardown itself with a ...

Complete Guide to 5G Base Station

Construction , Key Steps, ...

Explore how 5G base stations are built--from site planning and cabinet installation to power systems and cooling solutions. Learn the essential components, technologies, and challenges ...

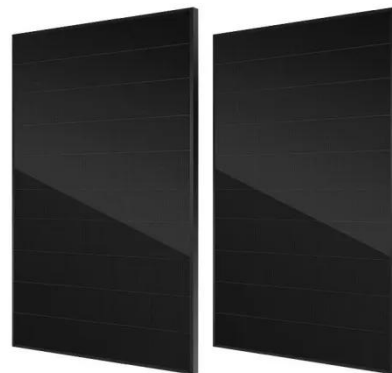


Base Stations

Base stations form a key part of modern wireless communication networks because they offer some crucial advantages, such as wide coverage, continuous communications and an array of ...

Mobile Communication Base Stations

Base stations face multiple risks, including physical, electrical, and environmental safety. A safety incident can not only cause site outages but also potentially damage equipment and cause casualties.



Huawei RRU3928 1800MHz radio base station teardown (part 1 and 2)

With the Software Defined Radio (SDR) technology, the RRU3928 supports

the dual-mode operation of any two modes of GSM, UMTS, and LTE through software configuration modification. ...



Installation Manual for the BS4 Basestation

First fit the rear mounting plate to the pole or lighting column. Once the mounting plate is secured, the base station case is then secured to the mounting plate. Finally, the outer plastic protective cover is ...



LFP12V100



Communication base station dedicated battery outdoor site

Among various battery technologies, Lithium Iron Phosphate (LiFePO4) batteries stand out as the ideal choice for telecom base station backup power due to their high safety, long lifespan, and excellent ...

Communication Base Station

Lithium battery management technology combined with electronic technology to build a safe, intelligent and efficient

solution.



Contact Us

For catalog requests, pricing, or partnerships, please visit:
<https://kreatywny-dom.pl>

