

KREATYWNY ENERGY POLSKA

Does the photovoltaic support rail require size



Overview

Optimal rail spacing depends on panel dimensions, expected loads, and rail profile strength. Generally, rails should be positioned to support panels at the manufacturer-specified mounting points, typically 24-48 inches (600-1200 mm) apart depending on panel size and local. To estimate total rail size, simply multiply the module width (if in portrait, or the module length if in landscape) by the number of modules in a row. In the present case. Standard solar panels are usually around 60 to 72 cells in size, but larger panels may require more robust support and different spacing. Mounting System Design The design of the mounting system. Advanced rail systems feature reinforced designs with moment of inertia values typically ranging from 10-25 cm⁴, ensuring they can handle these demanding conditions while maintaining panel alignment and system integrity. In this presentation we look at putting together a simple spreadsheet that calculates the number of. The mounting rails should be spaced apart as above. They ensure proper alignment, maximize exposure to sunlight, and provide stability against environmental factors like wind and snow. Common types include roof mounts, ground mounts, and pole mounts, each suited to.

Does the photovoltaic support rail require size



Solar Racking Made Simple: What You Need to Know About

We will need a rail long enough to cover the 160 inches and remember that each module needs to be attached to two rails. For rails, it is always better to have a longer rail compared to a shorter rail so in ...

Mounting Solar Modules and Estimating Parts

Estimating the number and size of rails, mid and end clamps, L-feet, or standoffs for your solar installation could be troublesome. This brief introduction offers insight into estimating the number of ...

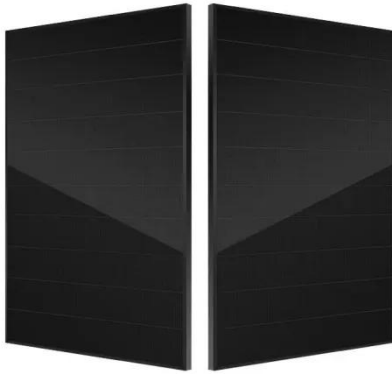


How far apart should solar panel rails be?

Standard solar panels are usually around 60 to 72 cells in size, but larger panels may require more robust support and different spacing. Manufacturers often provide guidelines on the ...

Photovoltaic rail bracket size requirements

Specifically, the flexible photovoltaic bracket can be customized according to the shape and size of the roof, and is suitable for various types of roofs, such as flat roofs, pitched roofs,



What is the Best Aluminum Rail for Solar Panel Roof Mounting

Generally, rails should be positioned to support panels at the manufacturer-specified mounting points, typically 24-48 inches (600-1200 mm) apart depending on panel size and local wind/snow conditions.

IronRidge_RoofMounting_PrintableB rochure

Anchored by IronRidge Standard or IronRidge Light rails, our Roof Mount platform includes every component necessary for supporting virtually any commercial or residential roof mount installation, ...



How to calculate solar rail feet on a commercial solar system, running

In this presentation we look at putting together a simple spreadsheet that



calculates the number of feet required for a rail run that is perpendicular to the rail.

Solar Rail: Essential for Efficient PV Systems

As is the case with all other installations, putting up solar rails has some prerequisites. The most critical one is the type of roof because different materials will demand diverse mounting ...



The distance from the photovoltaic panel to the rail

Installation of Solar Panel Rail Mounts. The installation of solar panel rail mounts involves attaching the mounts to the roof or ground using bolts or screws, then attaching the

Specifications and requirements for photovoltaic support rails

Photovoltaic panels are the heart of any solar system, and the way they are installed and mounted is essential to

ensure their efficiency and longevity. That is why at Sun-Age we specialise in the



Contact Us

For catalog requests, pricing, or partnerships, please visit:
<https://kreatywny-dom.pl>

