

KREATYWNY ENERGY POLSKA

How to mow the grass under photovoltaic panels



Overview

These mowers have a lower clearance to pass safely under solar panel arrays without causing damage. Remote-controlled mowers: In hard-to-reach areas or when safety is a concern, remote-controlled mowers can. The panels are only about 16-20" off the (sometimes uneven) ground and we have to get back about 3' or so under them. The rows are about 8-10' wide and at least 100 yards long. The dilemma: How to mow under (the low side), between (down the middle) and under the high side, without throwing a rock. Mowing A Solar Field With Ventrac We are at a solar field using a 4520 Tractor and Tough Cut to mow the grass down between panels. Maintaining solar fields is simple because the grass just needs to be cut down to prevent it from growing up into the panels or components. These types of jobs are. Solar farms are large-scale solar panel installations designed to harness sunlight and convert it to electricity. Options exist from very low maintenance management of ground cover to more intensive agricultural production systems.

How to mow the grass under photovoltaic panels



Getting Out of the Weeds: How To Control Vegetative Growth Under ...

There are several weed control methods used for PV ground-mount systems in Japan; mowing, spraying herbicide, grazing sheep/goats, and covering the area with weed control sheets, for example.

Solar Farm Mowing Anyone done it?

The dilemma: How to mow under (the low side), between (down the middle) and under the high side, without throwing a rock or breaking the panels, efficiently. They are at a fixed 30 degree ...



Solar Mowing Solution

This guide will look at the importance of regularly mowing the area around your solar panels and why the GreenTec Barrier Mower is the perfect solution for this challenging task.

The Importance of Mowing Your

Solar Lawn

Where solar panels are fixed tilt and ground clearance is less than 12 inches, vegetation is eradicated or cut as low as reasonably possible. Any contract services relating to the above. All ...

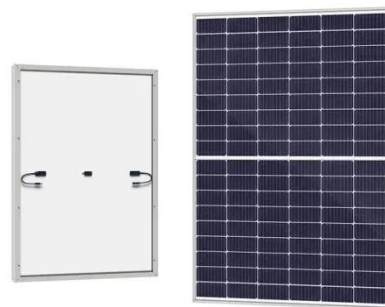


Ventrac Video

We are at a solar field using a 4520 Tractor and Tough Cut to mow the grass down between panels. Maintaining solar fields is simple because the grass just needs to be cut down to prevent it from ...

Landscape Basics for Mowing & Maintaining Solar Farms

Solar farms can even use sheep to trim grass around and under panels without damaging equipment. Solar grazing can promote biodiversity and supplement traditional mowing as a cost-saving measure.



MOWING SOLAR FARMS

Effective vegetation management can improve access to solar panels, reduce maintenance costs, and promote ecosystem services. Mowing Solar Farms

is one key aspect of vegetation management, ...



Planning and Managing Permanent Vegetation Under Solar Arrays

To date, the most common plans for vegetation management under solar arrays are mechanical control (mowing), grazing sheep, and pollinator habitat, or a combination of these three.

 **TAX FREE**

Product Model
HJ-ESS-215A(100KW/215KWh)
HJ-ESS-115A(50KW 115KWh)

Dimensions
1600*1280*2200mm
1600*1200*2000mm

Rated Battery Capacity
215KWH/115KWH

Battery Cooling Method
Air Cooled/Liquid Cooled



ENERGY STORAGE SYSTEM



-  **Efficient Higher Revenue**
 - Max. Efficiency 97.5%
 - Max. PV Input Voltage 600V
 - 150% Peak Output Power
 - 2 MPP Trackers, 150% DC Input Overvoltage
 - Max. PV Input Current 15A, Compatible with High Power Modules
-  **Intelligent Simple O&M**
 - IP65 Protection Degree: support outdoor installation
 - Smart I-V Curve Diagnosis Function: locate PV string faults accurately and automatically detect faults
 - DC & AC Type II SPD: prevent lightning damage
 - Battery Reverse Connection Protection
-  **Flexible Abundant Configuration**
 - Plug & Play, EPS Switching Under 30ms
 - Compatible with Lead-acid and Lithium Batteries
 - Max. 8 units Inverters Parallel
 - AFCI Function (Optional): when an arc fault is detected the inverter immediately stops operation

Planning and Managing Permanent Vegetation Under Solar Arrays

Existing Site Conditions
Pre-Construction
Actions
Plant Species Selection
Post-Construction Considerations

To date, the most common plans for vegetation management under solar arrays are mechanical control (mowing), grazing sheep, and pollinator habitat, or a combination of these three. In almost every scenario a mixture of different plant species will provide more desirable outcomes than a monoculture. Mixtures provide diversity in growth habits with a See more on blogs [rnell buckeyefarmers](#)

Solar Mowing Solution -

Solutions , Buckeye Farmers

This guide will look at the importance of regularly mowing the area around your solar panels and why the GreenTec Barrier Mower is the perfect solution for this challenging task.

Mowing A Solar Field

Maintaining solar fields is simple because the grass just needs to be cut down to prevent it from growing up into the panels or components. These types of jobs are typically contracted out



Solar Farm Mowing Costs Per Acre - A Comprehensive Guide

While more frequent mowing ensures optimal panel efficiency, it also adds to the maintenance expenses. Conversely, mowing less frequently might lead to increased shading and ...

Contact Us

For catalog requests, pricing, or partnerships, please visit:
<https://kreatywny-dom.pl>

