

KREATYWNY ENERGY POLSKA

Huawei communication base station wind power



Huawei communication base station wind power



Huawei Galaxy AI Power Plant Network Solution

Huawei's intelligent solution for wind power lets you monitor and control your wind farm remotely with real-time data and insights. Discover how.

Supplier of wind and solar complementary components for ...

· This article aims to reduce the electricity cost of 5G base stations, and optimizes the energy storage of 5G base stations connected to wind turbines and photovoltaics.



Huawei's reasons for building wind power for communication base ...

This study offers a comprehensive roadmap for low-carbon upgrades to China's base station infrastructure by integrating solar power, energy storage, and intelligent operation strategies.

Huawei's Single SitePower drives energy synergies

China's Huawei has outlined how its latest energy technology has helped telecom operators in Africa maintain more stable power systems in the face of evolving challenges.



Huawei base station wind power supply technology

Considering that remote base stations must be highly-integrated, inexpensive, and modest, Huawei has developed its all-on-pole EasySite solution, which integrates the base station,

HUAWEI BASE STATION

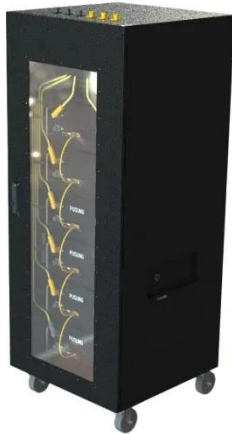
Huawei 5G communication base station wind power cost China Tower and Huawei conducted joint pilot verification in 2018 and found that the 5G Power solution could support effective 5G site deployment ...



Wind power construction of communication base stations

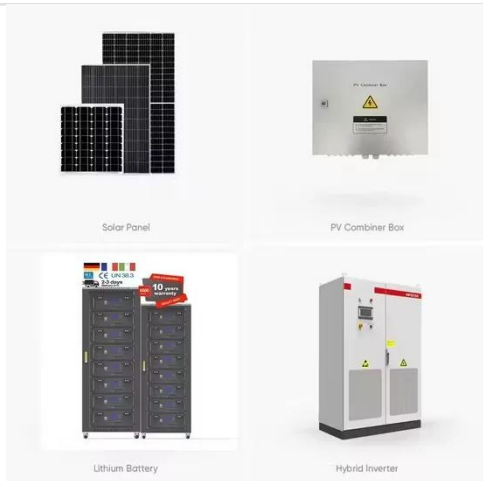
We investigate the use of wind turbine-mounted base stations (WTBSs) as a cost-effective solution for regions with high wind energy potential, since it could

replace or even outperform



Huawei base station equipment power supply wind power

To address this situation, Huawei offers PowerCube, an industry-leading hybrid power supply solution. Built along the lines of a Micro-Grid Energy System (MGES), it comprises four elements - power ...



Wind Load Test and Calculation of the Base Station Antenna

Among wind load measurement tests, the wind tunnel test simulates the environment most similar to the actual natural environment of the product and therefore is the most accurate test method.

Huawei s joint venture for communication base stations and wind ...

Huawei is accelerating the digital

transformation of base stations by adopting AI and IoT. Harnessing these digital technologies, 5G Power optimizes coordinated scheduling between various systems, ...



Contact Us

For catalog requests, pricing, or partnerships, please visit:
<https://kreatywny-dom.pl>

