

# Lithium battery pack voltage range



## Overview

---

Lithium ion battery voltage typically ranges from 3.2V (fully charged) per cell. This voltage determines device compatibility, energy capacity, and safe charging practices. But just like too much water pressure can burst. Nominal voltage is the standard operating voltage of a LiFePO4 battery pack cell, typically 3. In series, multiple cells increase voltage (e. Whether you're powering an RV, a marine application, a solar storage system, or any critical device, a precise. A lithium-ion battery has a nominal voltage of 3.

## Lithium battery pack voltage range

---



### Lithium Battery Voltage Chart: The Ultimate 2025 Guide

Optimal Charging Voltage: Adhere to the 14.2V to 14.6V range for a 12V lithium battery. Use a Compatible Charger: Always use a charger that follows the CC/CV profile for LiFePO4 chemistry.

---

### Guide to LiFePO4 Voltage Chart

Renowned for stability, safety, and long cycle life, LiFePO4 batteries offer a nominal voltage of 3.2 volts per cell. This differs from traditional lithium-ion batteries, which typically have a ...



### LiFePO4 Voltage Charts (1 Cell, 12V, 24V, 48V)

The ideal voltage for a lithium-ion battery depends on its state of charge and specific chemistry. For a typical lithium-ion cell, the ideal voltage ...

---

### The Complete Guide to Lithium-Ion Battery Voltage Charts

The ideal voltage for a lithium-ion battery depends on its state of charge and specific chemistry. For a typical lithium-ion cell, the ideal voltage when fully charged is about 4.2V.



### Introduction: What Is a Lithium-Ion Battery Pack?

Whether you need a 7.4V, 11.1V, or 14.8V battery pack, understanding their structure, chemistry, and configuration is crucial. In this guide from A& S Power, we'll explain the different types of Li-ion ...

### Lithium-Ion Battery Voltage: How Many Volts And Types Explained In

What Is the Standard Voltage of a Lithium-Ion Battery? The standard voltage of a lithium-ion battery typically ranges from 3.0 to 4.2 volts per cell. This voltage range is crucial for the battery's ...

### ESS



### Lithium Battery Voltage Guide: Li-ion, LiPo, LiFePO4, 18650

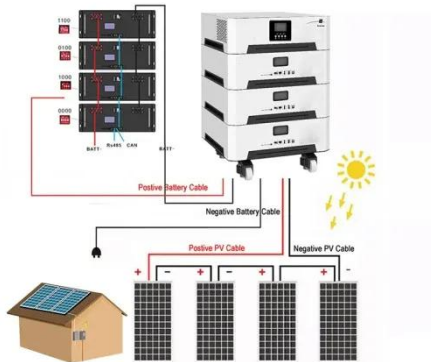
This comprehensive guide explains key voltage characteristics of major lithium



battery types, including Li-ion, LiPo, LiFePO4, and 18650 batteries, with detailed voltage comparison charts ...

## LiFePO4 Battery Pack: 2025 Technical Parameters Guide

The operating voltage range is the safe voltage window for a LiFePO4 battery pack, from 2.5V (fully discharged) to 3.65V (fully charged). Staying within this range (10V-14.6V for a 12.8V pack) ...



## LiFePO4 Voltage Charts (1 Cell, 12V, 24V, 48V)

What voltage should a LiFePO4 battery be? Between 12.0V and 13.6V for a 12V battery.

## Ultimate Guide to Battery Voltage Chart

Charging to 29.2V means that the battery pack is fully charged, and each cell reaches 3.65V at this moment. Discharging to 20V means that the

battery pack has been fully discharged,

...



 TAX FREE    

### ENERGY STORAGE SYSTEM

**Product Model**  
HJ-ESS-215A(100KW/215KWH)  
HJ-ESS-115A(50KW/115KWH)

**Dimensions**  
1600\*1280\*2200mm  
1600\*1200\*2000mm

**Rated Battery Capacity**  
215KWH/115KWH

**Battery Cooling Method**  
Air Cooled/Liquid Cooled



### Lithium-Ion Battery Voltage Chart

What Voltage is a Fully Charged Lithium-Ion Battery? A fully charged lithium-ion battery typically measures between 4.1V and 4.2V per cell. This voltage range represents 100% state of ...

## Contact Us

For catalog requests, pricing, or partnerships, please visit:  
<https://kreatywny-dom.pl>

