

Lithium iron phosphate voltage



Overview

The optimum voltage for a LiFePO₄ (Lithium Iron Phosphate) battery typically ranges between 13. This potential range ensures efficient operation while maximizing the battery's lifespan and maintaining its capacity. Download the LiFePO₄ voltage chart here (right-click -> save image as). These high-capacity batteries effectively store energy and power a variety of devices across different environments.

Lithium iron phosphate voltage



Understanding the LiFePO4 Voltage Chart

Discover the LiFePO4 voltage chart and how voltage affects power delivery, energy storage, and lifespan. Optimize device performance and longevity.

LiFePO4 Voltage Charts (1 Cell, 12V, 24V, 48V)

This article will show you the LiFePO4 voltage and SOC chart. This is the complete voltage chart for LiFePO4 batteries, from the individual cell to 12V, 24V, and 48V.



LiFePO4 Battery Guide: Voltage Chart, Charging & Storage Tips

This guide dives deep into the LiFePO4 battery voltage-SOC (State of Charge) chart, charging best practices, and storage must-knows, giving you everything you need to make your ...

Guide to LiFePO4 Voltage Chart

LiFePO4 battery voltage refers to the electrical potential difference within Lithium Iron Phosphate batteries, a type of lithium-ion battery. Renowned for stability, safety, and long cycle life, ...

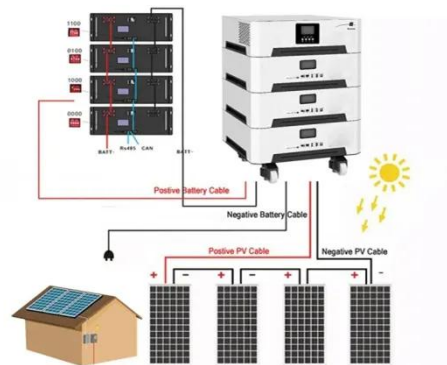


LiFePO4 Battery Voltage Chart: Your Ultimate Guide

The LiFePO4 voltage chart is key to understanding battery performance and safety. This guide covers essential voltage details and a reference chart.

LiFePO4 Battery Voltage Charts (12V, 24V & 48V)

Here are lithium iron phosphate (LiFePO4) battery voltage charts showing state of charge based on voltage for 12V, 24V and 48V LiFePO4 batteries -- as well as 3.2V LiFePO4 cells.



A Comprehensive LiFePO4 Voltage Chart Guide for Off-Grid Systems

Every lithium iron phosphate battery has a nominal voltage of 3.2V, with a charging voltage of 3.65V. The discharge cut-down voltage of LiFePO4 cells is



2.0V. Here is a 3.2V battery voltage chart. ...

Lithium iron phosphate battery

Multiple lithium iron phosphate modules wired in series and parallel to create a 2800 Ah 52 V battery module. Total battery capacity is 145.6 kWh. Note the large, solid tinned copper busbar connecting ...



GEL Battery



Lithium Battery



Container storage system



Power Battery

The Comprehensive Guide to LiFePO4 Voltage Chart

Explore our comprehensive guide to the LiFePO4 voltage chart. Understand voltage specifications, applications, and tips for optimal battery performance!

The Definitive Guide to LiFePO4 Lithium Battery Voltage Charts

LiFePO4 batteries typically have a nominal cell voltage of 3.2 volts. This is in contrast to conventional lithium-ion batteries, which generally have a

nominal voltage of 3.6 to 3.7 volts per cell.



Contact Us

For catalog requests, pricing, or partnerships, please visit:
<https://kreatywny-dom.pl>

