

KREATYWNY ENERGY POLSKA

Parabolic Solar Power Station



Parabolic Solar Power Station

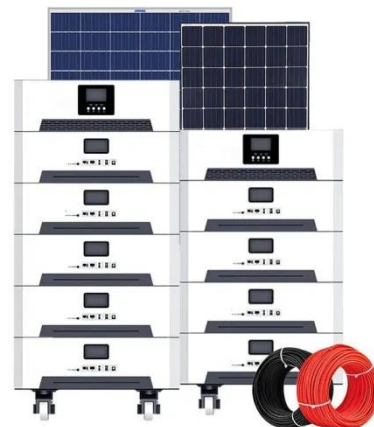


Parabolic trough

A diagram of a parabolic trough solar farm (top), and an end view of how a parabolic collector focuses sunlight onto its focal point. The trough is usually aligned on a north-south axis, and rotated to track ...

10.2. Parabolic Trough Collector Systems , EME 811: Solar Thermal

Solar Energy Generating Systems (SEGS) is the name of the world's largest parabolic trough solar thermal electricity generation system, developed by Luz in southern California, USA.



Parabolic Trough Collector: Working, Benefits, And Drawbacks

Learn what a parabolic trough collector is, its uses, advantages, disadvantages, and working principle. Find out how it is different from solar PV systems.

Parabolic Trough

DOE funds solar research and development (R& D) in parabolic trough systems as one of four concentrating solar power (CSP) technologies aiming to meet the goals of the SunShot Initiative.



Parabolic Trough Solar Thermal Electric Power Plants (Fact ...

Parabolic trough power plants use concentrated sunlight, in place of fossil fuels, to provide the thermal energy required to drive a conventional power plant.

Design Strategy and Performance Assessment of a Parabolic Trough ...

In this work, the parabolic trough collector has been subject to steady-state modeling considering different modes of thermal exchange. Once validated, this model was used to devise a ...



ESTELA , Parabolic Trough

The Andasol solar power plants located near Andalusia (Spain) is a 150 MW CSP station and Europe's first commercial plant to use parabolic troughs. The

Andasol plant uses tanks of molten salt as ...



Parabolic Trough Plant

Parabolic trough plants are a type of concentrated solar power technology that utilize large arrays of parabolic mirrors to focus sunlight onto a linear receiver pipe, where a heat transfer fluid is heated ...



Parabolic Trough , Concentrated Solar Power , CSP

The "solar farm" or array of parabolic troughs that provide the energy to produce clean power at a concentrated solar power plant are curved mirrors that are designed to reflect the energy from the ...

Parabolic Trough

Solar power plants that use parabolic troughs are capable of generating hundreds of megawatts of electricity, which can be fed into the grid to power

homes, businesses, and industries.



Contact Us

For catalog requests, pricing, or partnerships, please visit:
<https://kreatywny-dom.pl>

