

Photovoltaic panel installation density requirements



Photovoltaic panel installation density requirements



Land Requirements for Utility-Scale PV: An Empirical Update ...

Out of date: Pre-2013 data misses all of the subsequent advances in terms of module capacity, plant design, single-axis tracking, etc. o With utility-scale PV density and land- use issues ...

Land Requirements for Utility-Scale PV: An Empirical Update ...

Mark Bolinger and Greta Bolinger
 Abstract--The rapid deployment of large numbers of utility-scale photovoltaic (PV) plants in the United States, combined with heightened expectations of ...



Solar Photovoltaic: SPECIFICATION, CHECKLIST AND GUIDE

The builder should install and label slots suitable for a 70-amp double pole breaker in the electric service panel for use by the solar PV system (see Figure 10).

Solar PV Installation Guidelines

The South African Photovoltaic Industry Association (SAPVIA) has developed a quality mechanism, the PV GreenCard, to ensure that Rooftop Solar PV installations are done responsibly ...

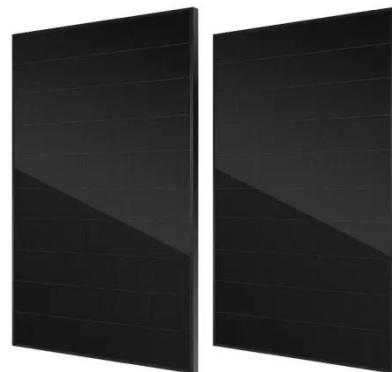


Photovoltaic panel installation technical specifications

The Federal Energy Management Program (FEMP) provides this tool to federal agencies seeking to procure solar photovoltaic (PV) systems with a customizable set of technical specifications.

Photovoltaic panel overall installation specification ...

This Solar + Storage Design & Installation Requirements document details the requirements and minimum criteria for a solar electric ("photovoltaic" or "PV") system ("System"), or Battery



Effectiveness of Installing a Photovoltaic System on a High-Density

The fourth and final stage involves evaluating the effectiveness of the PV



panel installation on a high-density higher-education building by comparing the building's total estimated ...

(PDF) Land Requirements for Utility-Scale PV: An

In the main scenario (Best Policy Scenario (BPS), see Section 2.3), solar PV is limited to 1% of total land area demand with a power installation density that is growing from 91 MW/km² for ...



Photovoltaic panel installation density requirements

Correct Installation of Photovoltaic (PV) System If 6 PV panels are erected on an independent supporting structure and the weight of each PV panel is around 26kg.

Contact Us

For catalog requests, pricing, or partnerships, please visit: <https://kreatywny-dom.pl>

