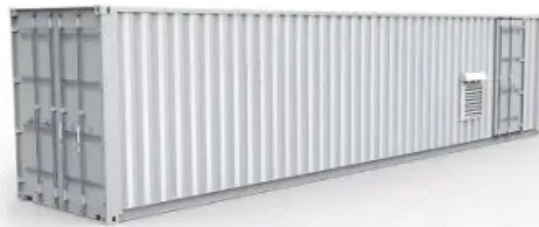


Power consumption calculation for telecom stations with solar storage



Overview

Operators must calculate the total power consumption of all telecom equipment, then add a buffer to account for inefficiencies and future growth. The communication base station installs solar panels outdoors, and adds MPPT solar controllers and other equipment in the computer room. The power generated by solar energy is used by the DC load of the base station computer room, and the insufficient power is supplemented by energy storage. This paper contains the different site survey procedure and designs by Google SketchUp that are required for the implementation of PV system for mobile Tele-communication tower. INTRODUCTION Nowadays conventional. The objective of this study is to develop a hybrid energy storage system under energy efficiency initiatives for telecom towers in the poor grid and bad grid scenario to further reduce the capital expenditure (CAPEX) and operational expenditure (OPEX) besides reducing carbon emissions. The present. Base stations are used to communicate with mobile devices (such as mobile phones, wireless network cards, etc.) and transmit data, enabling wireless communication coverage. As Architects of Continuity™, Vertiv solves the most important challenges facing today's data centers, communication networks and commercial and industrial facilities with a portfolio of power, cooling and IT infrastructure solutions and services that extends from the.

Power consumption calculation for telecom stations with solar storage

LIQUID COOLING ENERGY STORAGE SYSTEM

EMS real-time monitoring
No container design
flexible site layout



Cycle Life
≥ 8000

Nominal Energy
200kwh

IP Grade
IP55

Optimum sizing and configuration of electrical system for

This study develops a mathematical model and investigates an optimization approach for optimal sizing and deployment of solar photovoltaic (PV), battery bank storage and a diesel ...

Telecom Base Station PV Power Generation System Solution

The communication base station installs solar panels outdoors, and adds MPPT solar controllers and other equipment in the computer room. The power generated by solar energy is used by the DC load ...



CE UN38.3 MSDS



Energy Cost Reduction for Telecommunication Towers Using ...

The objective of this study is to develop a hybrid energy storage system under energy efficiency initiatives for telecom towers in the poor grid and bad grid scenario to further reduce the capital ...

(PDF) Design of Solar System for

LTE Networks

This article discusses the importance of using solar panels to produce energy for mobile stations and also a solution to some environmental problems such as pollution.



Design of PV System for Mobile Tele-Communication Tower

In this paper the standard procedure developed was affirm in the design of a mobile Tele-communication tower. This paper contains the different site survey procedure and designs by Google SketchUp that ...

Solar Modules + Energy Storage: Power Supply Assurance for Off ...

Solar modules combined with energy storage provide reliable, clean power for off-grid telecom cabinets, reducing outages and operational costs. Choosing the right solar module type and ...



Telecom Towers and Remote Base Stations

Discover comprehensive insights into powering telecom towers and remote base stations with off-grid solar and

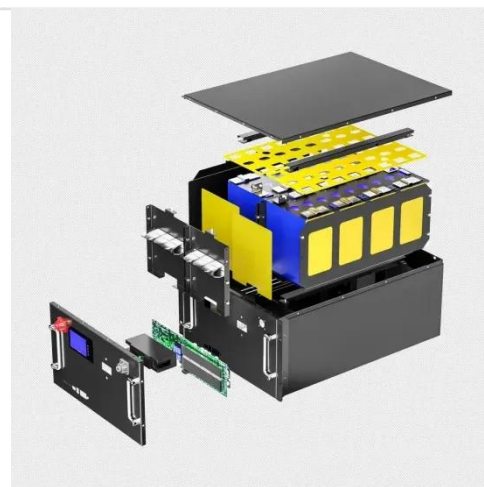
**FLEXIBLE SETTING OF
MULTIPLE WORKING MODES**



energy storage solutions. Explore LiFePO4 batteries, system design, and ...

For Telecom Applications

use of renewable energy. The solution is a hybrid approach that minimises the use of diesel generators, used only in case of emergency, while maximizes the use of solar power and batteries, boosting the ...



**Designing Solar Energy Systems for
Telecom Infrastructure**

This article explores the role of a Solar Energy Systems Designer in creating lasting solutions that not only reduce carbon footprints but also enhance operational efficiency and reliability for telecom ...

**Solutions for the Power
consumption of telecommunication
base station**

The following is an analysis from the perspectives of core equipment power

consumption, auxiliary system energy consumption, actual power consumption in different scenarios, and ...



Contact Us

For catalog requests, pricing, or partnerships, please visit:
<https://kreatywny-dom.pl>

