

**KREATYWNY ENERGY POLSKA**

# **Solar battery cabinet lithium battery pack voltage error**



## Overview

---

These signs follow low voltage cutoff after a deep drain, an overcurrent event, cold or hot cell temperatures, or a fault that the BMS reports during its own checks. Power down loads and isolate the battery. The sections below address common LiFePO4 battery problems and show how to restore stable operation with simple checks and settings for your lithium battery system. Charging stalls for predictable reasons. Check temperature. Lithium battery packs power everything from solar energy storage systems to electric vehicles. A single error - like voltage imbalance or thermal runaway - can reduce efficiency by up to 40% (Global Battery Report, 2023). Let's break down the essentials: "Proactive error correction can extend. If faults persist or you see alarming signs such as bulging casings, smoke, or repeated breaker trips, call a Clean Energy Council (CEC)-accredited installer.

## Solar battery cabinet lithium battery pack voltage error



### LiFePO4 Troubleshooting: 5 Fixes for Lithium Battery Systems

The sections below address common LiFePO4 battery problems and show how to restore stable operation with simple checks and settings for your lithium battery system.

### LiFePO4 Battery Troubleshooting Guide: Fix Common BMS Issues Fas

Lithium Iron Phosphate (LiFePO4) batteries represent the gold standard in modern energy storage. They are celebrated for their incredible power density, safety profile, and longevity. However, even the ...



- IP65/IP55 OUTDOOR CABINET
- ALUMINUM
- OUTDOOR ENERGY STORAGE CABINET
- OUTDOOR MODULE CABINET

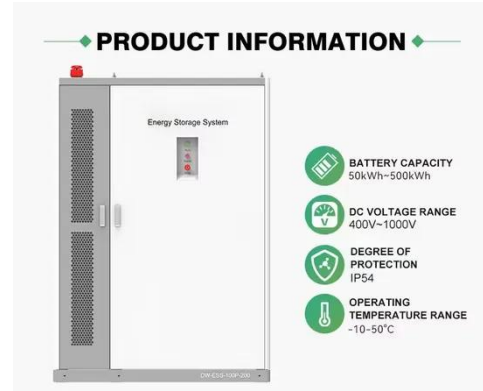
### 6. Troubleshooting & support

If the battery has a voltage of less than 10V (20V) or if one of the battery cells has a cell voltage below 2.5V, the battery will have permanent damage. This will invalidate the warranty.

### Lithium Battery Troubleshooting:

## Fix Charging & Common Issues

Discover effective Lithium Battery Troubleshooting. Learn how to fix charging issues, low voltage errors, and BMS faults. Trusted tips from Muller Energy NSW.

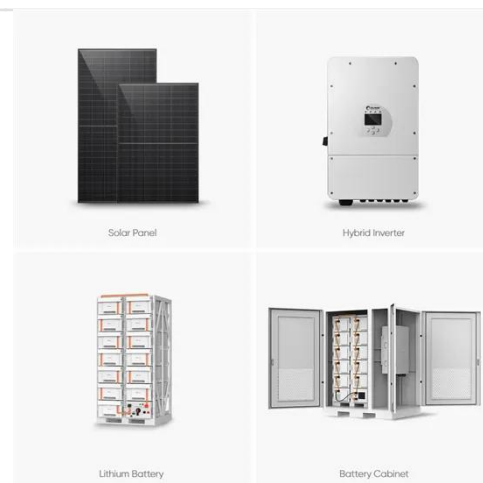


## Lithium Battery Pack Error Correction: A Comprehensive Guide for

Wondering how to troubleshoot lithium battery pack errors effectively? This guide dives into proven correction methods, industry trends, and actionable solutions - perfect for engineers, renewable ...

## Why Your Lithium Battery Isn't Charging from Solar -- And How to Fix It

When your lithium battery isn't charging from your solar panel setup, it can be frustrating, especially if you're off-grid or camping. This guide covers common reasons your battery isn't ...



## Common Solar Battery Problems and How to Fix Them

Experiencing issues with your solar battery? Learn the most common faults, how to troubleshoot them, and when to call a professional.



## Why Your Lithium Battery Pack Has No Voltage Output ...

Lithium-ion batteries power everything from solar energy storage systems to electric vehicles (EVs). When voltage output drops to zero, it often signals critical issues requiring immediate attention.



## How Can I Troubleshoot Common Issues with My DIY Battery Pack?

Troubleshooting common issues with DIY battery packs, especially those involving lithium-ion cells, requires a methodical approach to diagnose and resolve problems efficiently.

## Optimized Guide: How to Diagnose and Troubleshoot 12.8V LiFePO4 Solar

Learn to diagnose & fix 12.8V LiFePO4 solar battery issues: voltage, capacity,

charging, & more. Keep your solar system running smoothly with our expert troubleshooting guide!



---

## Contact Us

---

For catalog requests, pricing, or partnerships, please visit:  
<https://kreatywny-dom.pl>

