

# **The distance between the front and back of photovoltaic solar panels**



## The distance between the front and back of photovoltaic solar panel

---

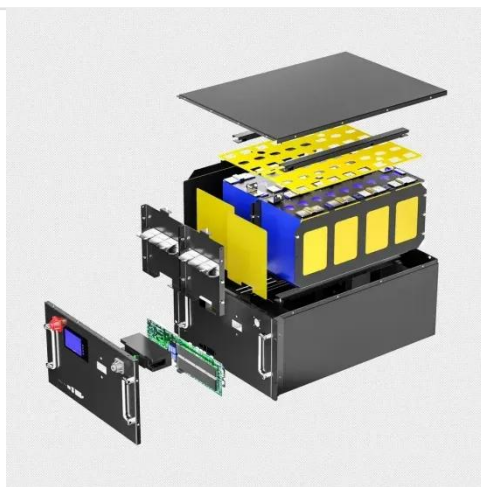


### Calculation formula for the distance between the front and rear of

To calculate the distance between the front and rear of solar photovoltaic panels, you'll need to consider several factors, including the dimensions of the panels, the tilt angle of the panels, and any mounting

## Shade Calculator

Knowing the minimum angle of incidence of sunlight during the year, it is possible to determine the distance between successive rows of photovoltaic panels. The figure below shows the schematic ...



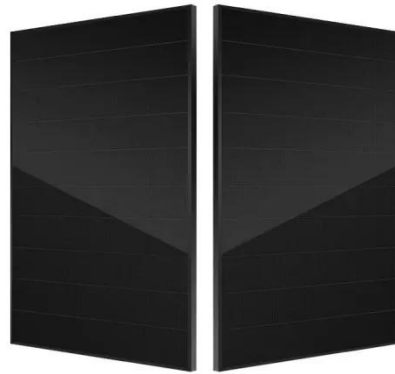
### Photovoltaic Array Row Spacing Calculator

The row spacing of a photovoltaic array is the distance between the front and rear rows of solar panels. This spacing is calculated to ensure that the rear panels are not shaded by the front panels, ...

## How to Calculate the Minimum

## Distance Between PV Panels?

What is the minimum distance required between rows of PV panels? This spacing is not just about aesthetics or layout -- it directly affects energy output, system efficiency, and return on investment. ...



## How to Calculate Solar Panel Row Spacing for Maximum Efficiency

To take the guesswork out, we've built a Solar Panel Row Spacing Calculator. Enter your site's latitude, tilt, and azimuth, and it will calculate the minimum spacing needed to avoid shading at ...

## How to Calculate the Minimum Distance Between PV Panels?

Understand the importance of minimum installation distance for solar panels, calculation methods, and relevant regulations to ensure efficient operation and compliance of solar energy ...



## Optimal Spacing Guidelines for Solar Roof Mounts

One crucial aspect to consider when installing solar roof mounts is the spacing between each mount. This

spacing has a significant impact on the structural integrity of the system and ...



## Optimal Spacing Between Solar Panels

Using this calculator, you can determine the ideal distance between rows based on your location, panel tilt, height, and seasonal sun position, ensuring your solar array performs at its best all year round. ...



## PV Row to Row Spacing

To determine the correct row-to-row spacing, refer to the figure above. There is no single correct answer since the solar elevation starts at zero in the morning and ends at zero in the evening.



## Contact Us

For catalog requests, pricing, or partnerships, please visit:  
<https://kreatywny-dom.pl>

