

KREATYWNY ENERGY POLSKA

What is power station energy storage battery



What is power station energy storage battery



Battery Energy Storage: Key to Grid Transformation & EV Charging

Battery Energy Storage: Key to Grid Transformation & EV Charging
Ray Kubis, Chairman, Gridtential Energy US
Department of Energy, Electricity Advisory Committee, June 7-8 ...

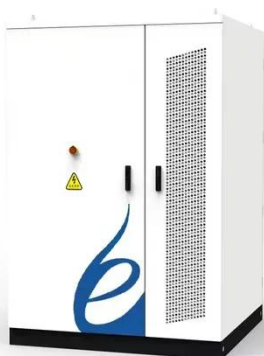
What kind of battery should be used in energy storage power station

In summation, choosing the appropriate battery for energy storage power stations involves delving into a multitude of factors, spanning from energy density, lifecycle costs, and ...



Grid-Scale Battery Storage: Frequently Asked Questions

A battery energy storage system (BESS) is an electrochemical device that charges (or collects energy) from the grid or a power plant and then discharges that energy at a later time to provide electricity or ...



How Battery Energy Storage Power

Stations Work: Key Mechanisms ...

Battery storage systems could have prevented 80% of outages, according to NREL studies. Modern battery energy storage power stations respond to grid fluctuations faster than you can say "blackout ...



What is battery storage?

Battery storage, or battery energy storage systems (BESS), are devices that enable energy from renewables, like solar and wind, to be stored and then released when the power is needed most.

Battery energy storage system

A battery energy storage system (BESS), battery storage power station, battery energy grid storage (BEGS) or battery grid storage is a type of energy storage technology that uses a group of batteries

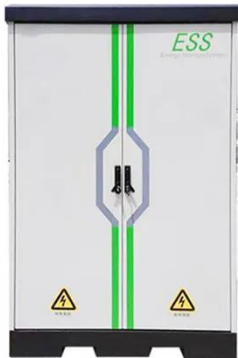
...



Battery Storage Power Station: Greening the Grid

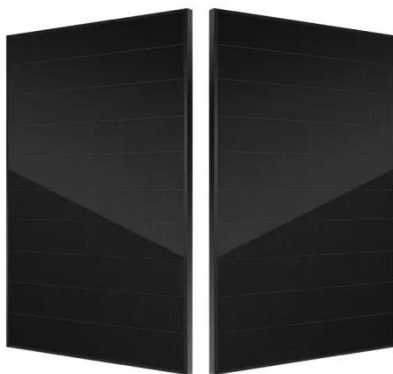
Battery storage power stations are basically massive smartphone batteries for the entire power grid - and they're changing everything. These systems

store excess electricity and release it ...



Battery storage power station - a comprehensive guide

Battery storage power stations store electrical energy in various types of batteries such as lithium-ion, lead-acid, and flow cell batteries. These facilities require efficient operation and management ...



Battery storage power station

A battery storage power station is a type of energy storage power station that uses a group of batteries to store electrical energy. Battery storage is the fastest responding source of ...

Battery Energy Storage: How It Works and Why It's Important

Learn how battery energy storage systems work, their key components,

and why they are vital for reliable, cost-efficient, and sustainable power.



Contact Us

For catalog requests, pricing, or partnerships, please visit:
<https://kreatywny-dom.pl>

