

KREATYWNY ENERGY POLSKA

Wind power generation cannot be used in winter



Overview

Is it true that wind turbines don't work in the winter?

No: with proper preparation, wind turbines can work in extreme cold temperatures and in snow and ice. But when the state's power grid fell short of energy demands, misinformation spread like wildfire — arguing that frozen wind turbines are to blame. Whenever an electric grid fails in cold weather, renewable energy opponents tend to claim that wind turbines are the problem — that wind turbines don't work in the cold. This message isn't new, and we've heard it from people in authority. Lost power during a cold. Winter is not universally windless: multiple studies show substantial wind energy potential in winter months, though there are important regional and episodic exceptions where wind power falls well below typical levels. The rotation of the blades turns a generator, which converts the mechanical energy of the rotation into.

Wind power generation cannot be used in winter



Fact Check: Do Wind Turbines Really Fail in Cold Weather?

In Canada, wind turbines may spend up to 20% of their time weathering winter months -- so specialized "cold weather packages" are installed to keep crucial turbine components like the pitch

Frozen Wind Turbines? Do Wind Turbines Even Work In The Winter?

Wind turbines work in the winter. Of course they do! For some wind farms, the windiest time of the year is during the winter. Certified wind turbines can operate down to -40° without ...

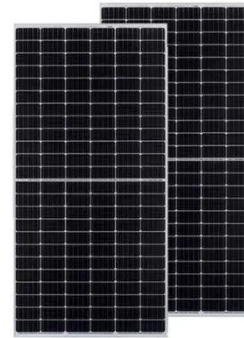


Wind Energy in Cold Climates

Atmospheric icing is a major concern for wind farms operating in cold climates, affecting installation, operation and maintenance, and negatively influencing power production and profitability.

Is it true that wind turbines don't work in the winter?

No: with proper preparation, wind turbines can work in extreme cold temperatures and in snow and ice.

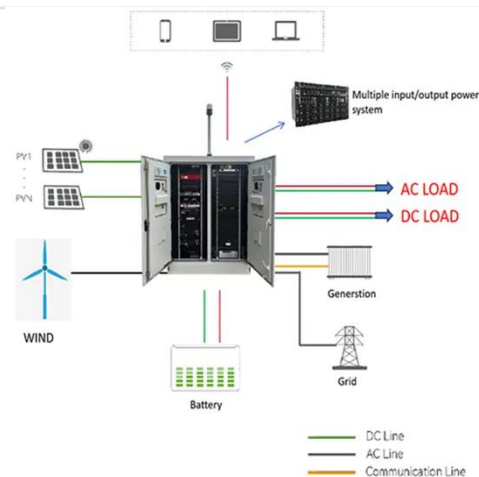


Will Winter Weather Affect Your Wind Energy?

Do cold temperatures impact wind turbines' energy production? We're here to investigate! Find out how wind energy production is affected by winter weather.

How do wind turbines work in cold weather?

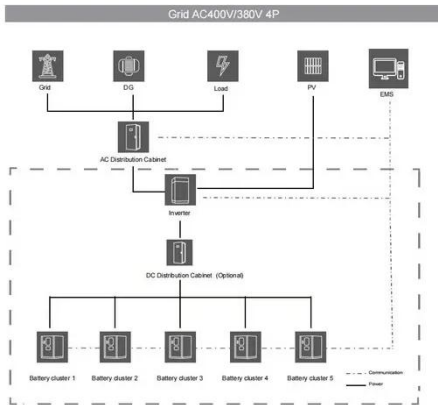
As temperatures continue to drop and we all huddle up in our homes to stay safe and warm this winter, keeping the power on is more important than ever. That's why DTE's renewable ...



Do wind turbines work when it's cold?

But is it true? As we'll show below, winter weather can slow down wind turbines, particularly by causing ice to build up on their blades. But wind turbine operators

are well aware of ...



Do Wind Turbines Freeze in Winter? Debunking the Myths

However, with winter comes misinformation around wind energy's effectiveness. Let's explore the facts and debunk the myths surrounding wind turbines and cold weather.



When it comes to wind power does the wind not blow in winter?

Winter is not universally windless: multiple studies show substantial wind energy potential in winter months, though there are important regional and episodic exceptions where wind power ...

Do Wind Turbines Work In Winter?

If you've ever discussed renewable energy with students, you've likely encountered the common misconception that wind turbines don't work in winter. Cold temperatures, ice, and snow can

raise ...



Contact Us

For catalog requests, pricing, or partnerships, please visit:
<https://kreatywny-dom.pl>

